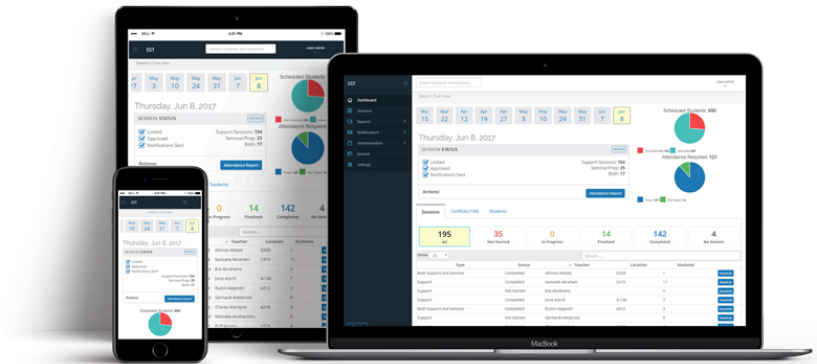


Student Support Time

Student Support Time is a complete solution for academic intervention and enrichment programs. It allows teachers and administrators to easily schedule, notify, and track real time intervention sessions. Student Support Time is a customizable solution to fit your needs.

Student Support Time was created by working closely with local high schools. The goal was to create an easy to use and effective tool to manage their WIN program: a designated weekly academic support block designed to meet the academic needs of students during the school day.



Academic Intervention and Enrichment Programs

Why? focused academic support time will:

- Strengthen connections and access between students and teachers
- Increase academic support and homework time resulting
- Allow students to re-learn and master learning standards
- Meet the needs of students working, participating in extracurricular activities or who may be unable to meet with teachers after school: lessen academic stress
- Allow students to achieve and strive for post-secondary readiness

How?

- Teachers request students that may need reteaching or assistance in making up missing work.
- Students will receive email notification if they are requested by a teacher or seminars are available.
- Administrators are able to see which students were requested, which attended, and resolve conflicts of teacher requests

Visit www.studentsupporttime.com for more details

Pricing 2025

Student Support Time	Term	Amount
Subscription Fee	Per year	
Enrollments < 500		\$2,100
Enrollments 500 - 1000		\$2,600
Enrollments 1000 - 2000		\$3,100
Enrollments 2000 - 3000		\$3,800
Enrollments 3000 +		\$4,600
Site Implementation	One time	\$300
Multiple Buildings (combined enrollment) *	Per building/year	\$500

* maximum of 5 schools or 5000 students, whichever is greater

Pricing Details

Standard support is included at no additional charge. Standard training and documentation is also included without charge. Subscription Fees listed are for Year 1 of the Agreement and include standard hosting services and standard support. Site Implementation Fees are based on standard hours required to perform the baseline site setup.

Subscription fees may be discounted for partial school years, as well as add on modules. Discounted pricing is also available for school districts with multiple schools subscribing to Student Support Time.

Additional fees may apply for text messaging options (based on number of messages sent).

Additional Modules

The primary focus of Student Support Time is to manage your school’s academic intervention or targeted support program. SST also has additional modules to support other needs, including:

Teacher Journal - tracks school to home communication and facilitates communication between teachers and staff.

Teacher Availability - Teachers easily set their weekly before and after school office hours; it is made available to students and their parents and students can sign up for help.

College Visit Sign-up - College visits are synced with Google or other calendar programs to allow students to sign-up for college visits. Students receive digital hall passes via email, attendance is tracked.

Testing Center Scheduler/Academic Tutors - Teachers can request times for students to utilize the testing resource center for test taking or academic assistance. Academic mentors, or tutors, can post their availability and students can sign up for tutoring/mentoring. Teachers can also request mentors and assistants for their classroom.

Digital Hall Passes - Reduce the need for paper hall passes and track in/out of building and other types of passes (including student issued passes) with scannable QR codes. Passes can be sent via email or text message.

Parent/Teacher Conferences - easy tool to set up conferences for teachers and allow parents/guardians to sign up for conferences. Includes features such as early scheduling for select students, and configurable types of conferences.

Personalized Learning Plan - allows students to plan out their 4 year academic schedule. Includes graduation requirement planning, year based tasks and reflections on students interests and plans.

Office Visit Tool - ideal for tracking and queuing student visits to office locations. Configurable for your building(s) and works great with the Journal. Students can sign up via iPad or Chrome book.

Student Referral - easy to use tool that allows teachers to refer students who have behavior or academic issues. Administrators are notified of referrals, resolution/consequences are tracked and referring staff notified

Detention Tracker/After School Programs - used to track and notify students and/or parents about detention or extra after school help.

Student Support Teams - used to coordinate and track student support and intervention (RTI). It was designed to have a flexible, yet cohesive tool for support teams to identify, track and verify student progress.

Module	Term	Amount
Teacher Journal (Contact Log)	Included with subscription	
Teacher Availability (Office Hours) and Flex Spaces	Included with subscription	
College Visit Sign Up	Per Year	\$250
Academic Mentors/Tutors	Per Year	\$500
Testing Center	Per Year	\$500
Digital Hall Passes	Per Year	\$1000

Parent Teacher Conferences	Per Year	\$500
Personalized Learning Plan	Per Year	\$500
Office Visit Tool (requires Hall Pass module)	Per Year	\$500
Student Referral	Per Year	\$500
Detention Tracker/After School Programs	Per Year	\$250
Student Support Teams	Per Year	\$1250

Subscription Fees with Modules Only

Your school may not have an academic intervention and enrichment program, but you would still like to utilize 1 or more of the additional modules that Student Support Time offers. Baseline subscriptions for this scenario are listed below.

Student Support Time	Term	Amount
Subscription Fee	Per year	
Enrollments < 500		\$500
Enrollments 500 - 1000		\$750
Enrollments 1000 - 2000		\$1,000
Enrollments 2000 - 3000		\$1,500
Enrollments 3000 +		\$2,000
Site Implementation	One time	\$300
Multiple Buildings (combined enrollment) *	Per building/year	\$500

* maximum of 5 schools or 5000 students, whichever is greater